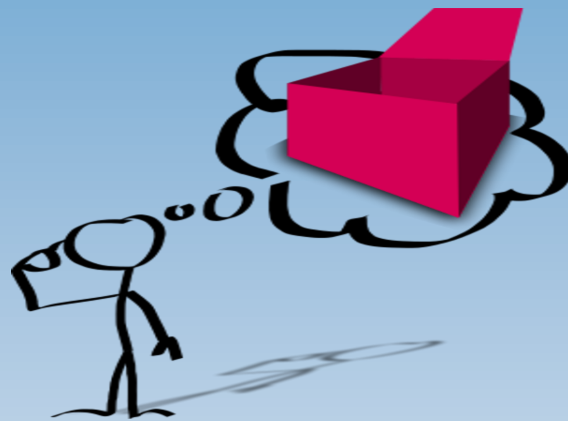


Grove Medical Centre

THROUGHOUT 2018, we will be holding short presentations by guest speakers, followed by open Q&A sessions

EVERYBODY IS WELCOME, each session to be held at GROVE MEDICAL CENTRE



Friday 15/06/2018 - 2.30—4.00pm DIABETES. Presentation by a **guest speaker from Diabetes UK**, to raise awareness of this condition and its prevention

Friday 14/09/2018 - 2.30pm—4.00pm PARKINSONS. Presentation by our **guest speaker Dr Tim Lockington, Parkinsons Specialist and Consultant Geriatrician at Ipswich Hospital**, on causes and symptoms of Parkinsons and how this condition can be managed

Friday 16/11/2018 - 2.30pm—4.00pm SOCIAL CARE. Presentation by **Jo Bigger, Connect Implementation Manager - East Suffolk** talking about how health and social care services are working together much more closely and linking in with the local community

The Grove Medical Centre PPG (Patients Participation Group) look forward to welcoming you.

Parking available at Grove Medical Centre Grove Road, Felixstowe IP11 9GA

